

*Borderlands*  
The Goshen Settlement of  
William Bolin Whiteside

56 1/2 M 55.91 X  
5.27 1/2  
56.14 E 34.7.35  
N 75° 25' E 85.00

See 29.  
Ac 640

See 28.  
Ac 640

# About Me

- SIUE History graduate in 2016
- Researched William B. Whiteside for senior project
- Currently technician for IRIS Center
  - Madison Historical tech developer

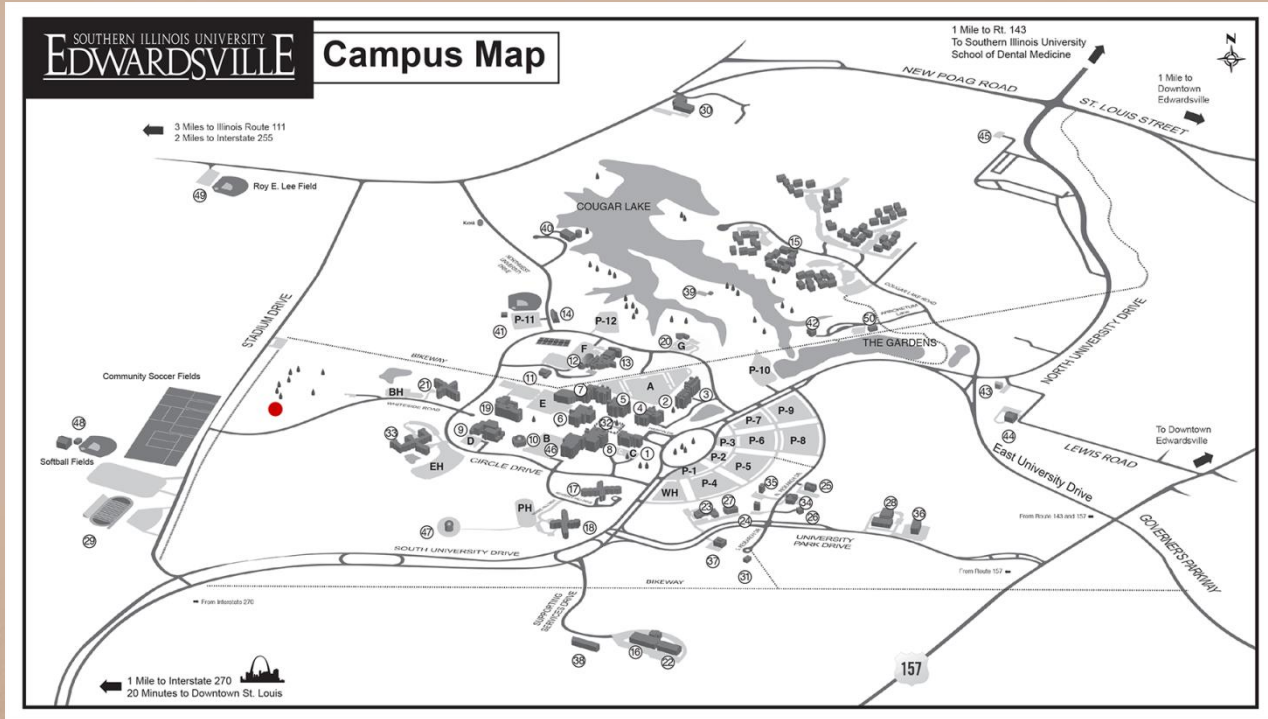
# An Obelisk and Headstone



# An Obelisk and Headstone



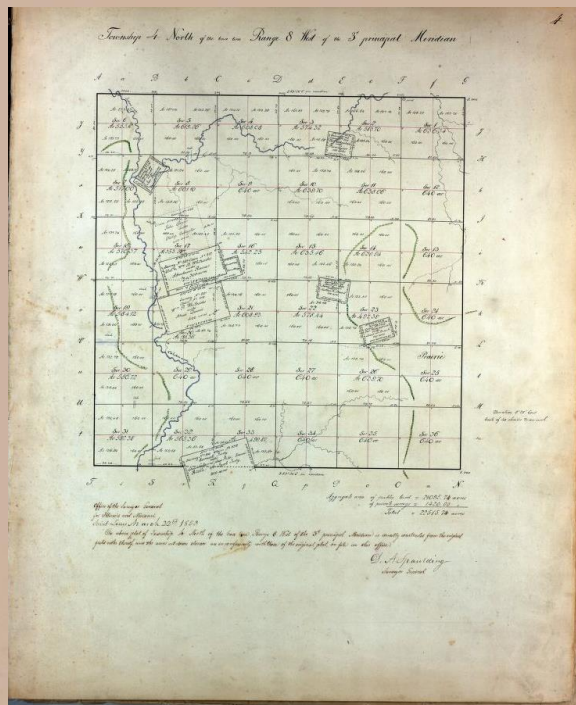
# A Lone Obelisk



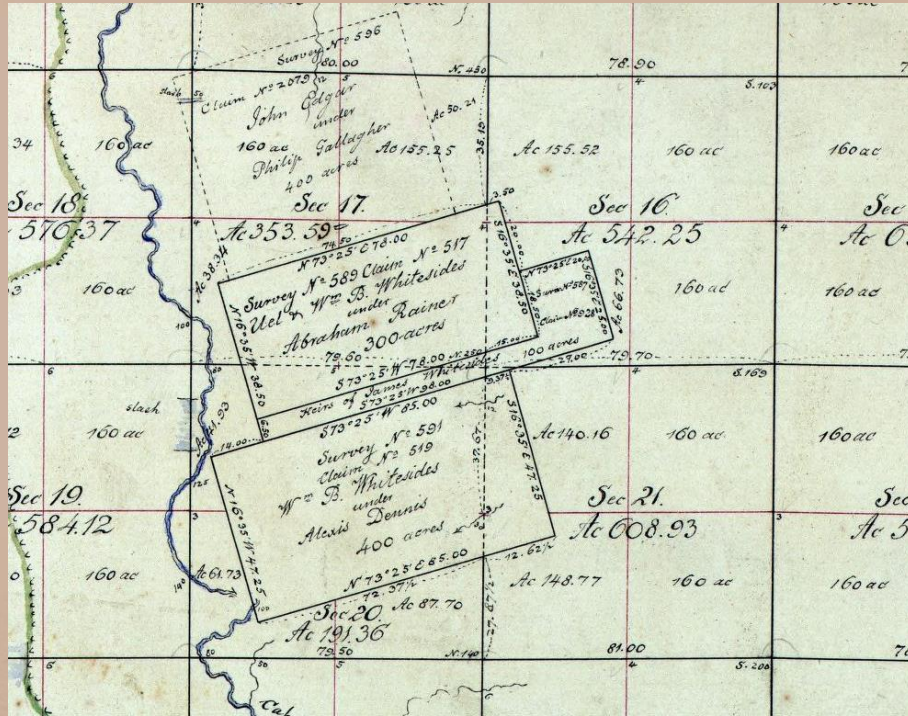
# Who was William B. Whiteside?

- One of the first American settlers in the area
- Lived on SIUE land 1802 to 1833
- War of 1812 and Blackhawk War Veteran
- Son of Revolutionary War Veteran
- Second Sheriff of Madison County

# 1815 Plat Map

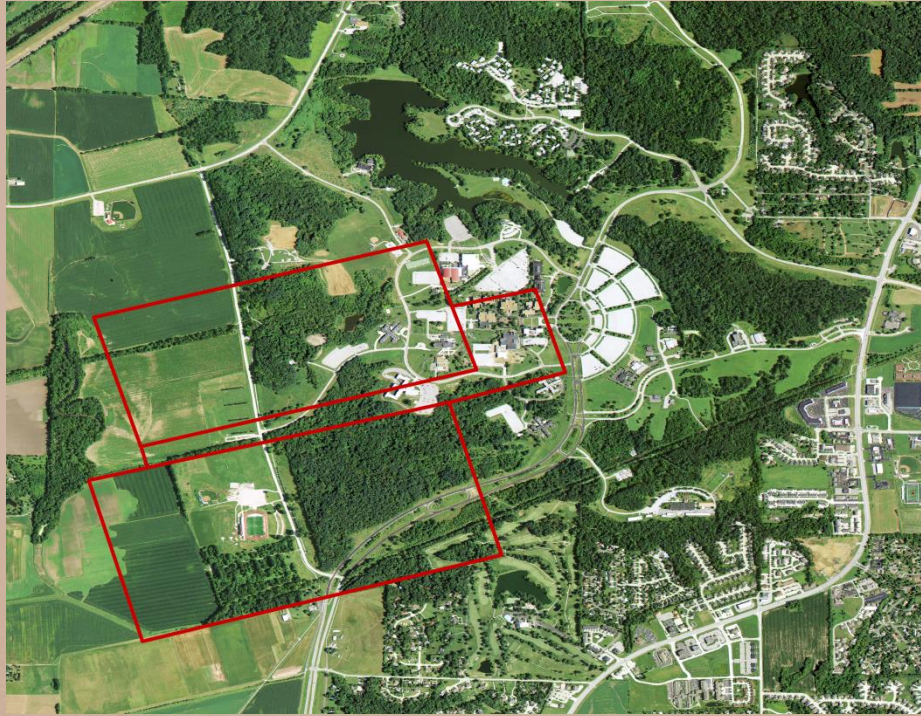


# 1815 Plat Map Zoom





# Land Today



# Historical Question

What caused early American settlers to drastically alter the environment of frontier Illinois between 1789 and 1833?



# My Project

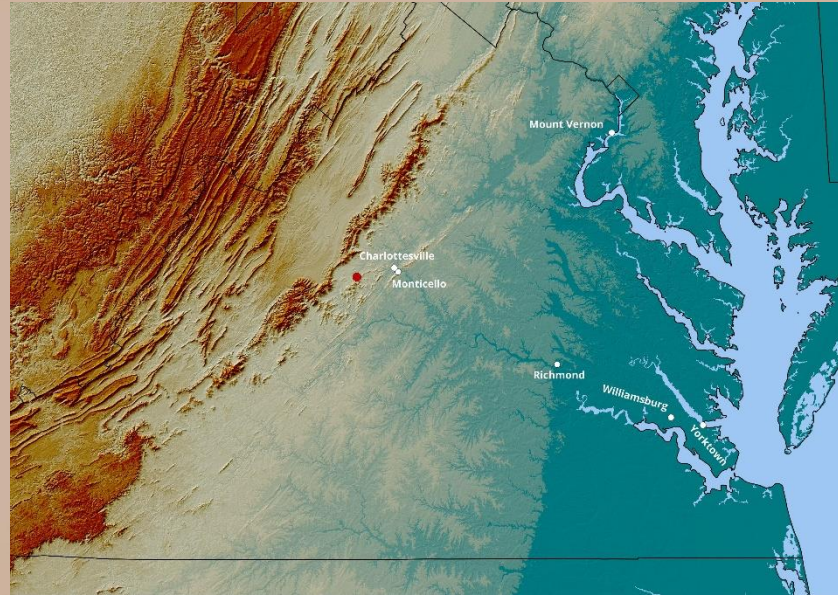
- Ideology: American settlers like the Whitesides felt culturally out of place, due to Native American and French presence. They responded by taming the wilderness to gain ownership.
- Materialism: Market capitalism turned nature into a commodity to be bought and sold.

# The Whiteside Family



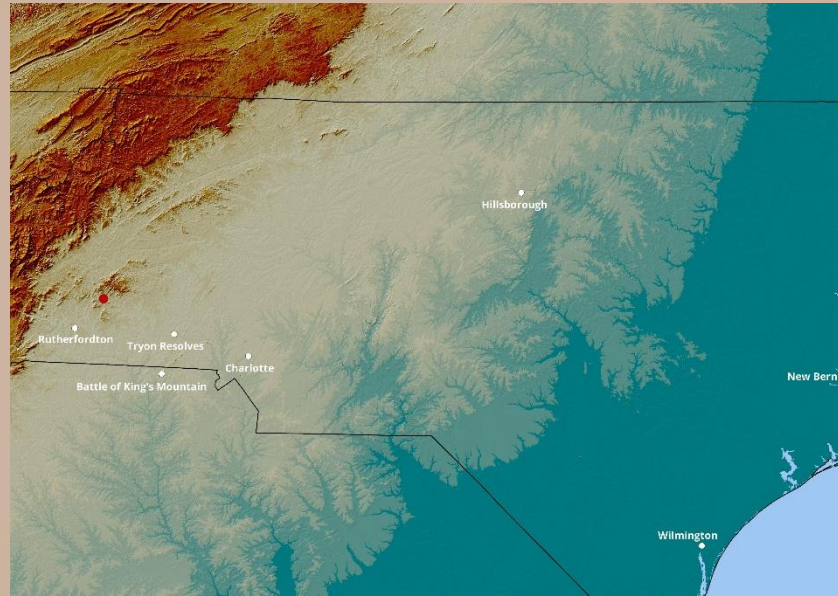
- English in origin
- Migrated to northern Ireland between 1650 and 1677

# The Whiteside Family



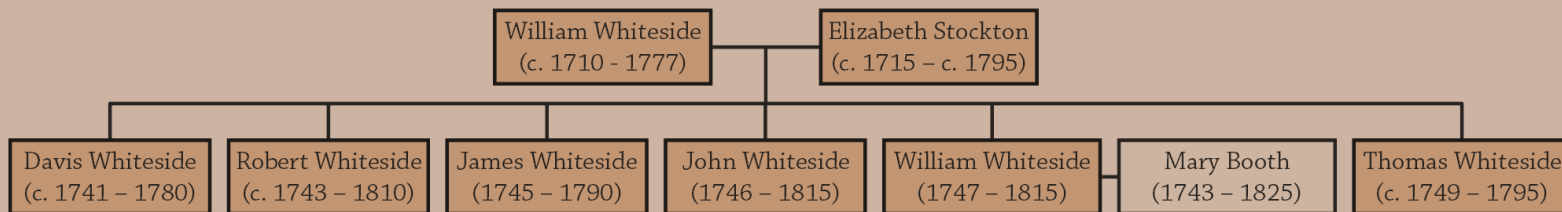
William Whiteside migrated to Virginia between 1710 and 1740

# The Whiteside Family



Family moved to North Carolina in 1760s

# The Whiteside Family



# The American Revolution

- The Whitesides supported the patriot cause, fighting against the British and Native Americans
- William Bolin was born December 27, 1777





Hillsborough

Rutherfordton

Tryon Resolves

Charlotte

Battle of King's Mountain

New Bern

Wilmington



Hillsborough

Rutherfordton

Tryon Resolves

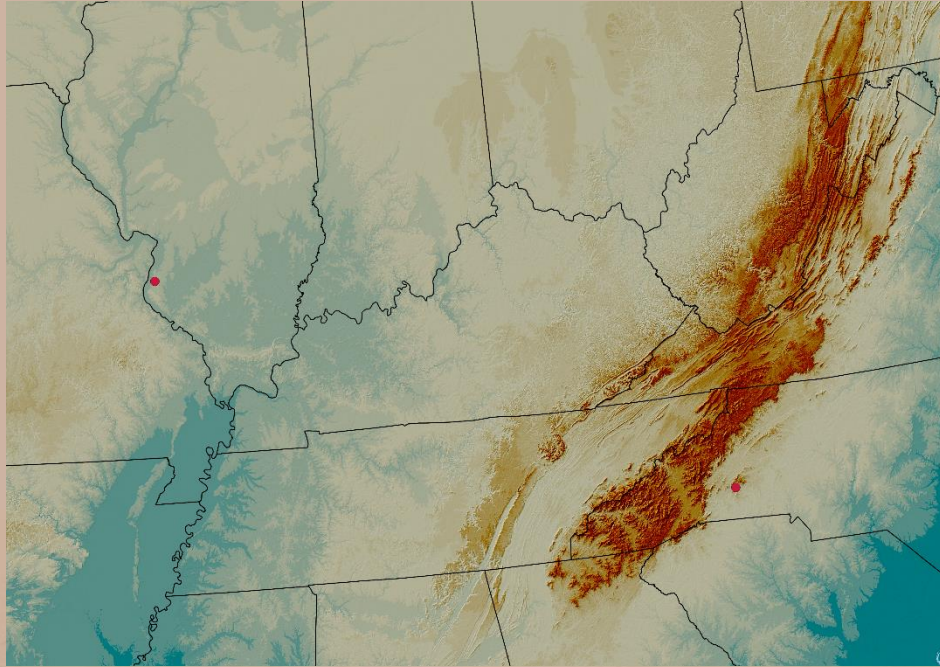
Charlotte

Battle of King's Mountain

New Bern

Wilmington

# Migration to Illinois



# Illinois in 1795



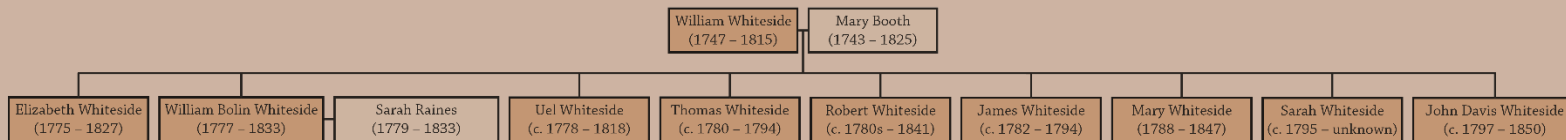
# Frontier Illinois

- Native Americans
- French
- British
- George Rodgers Clark and American settlement

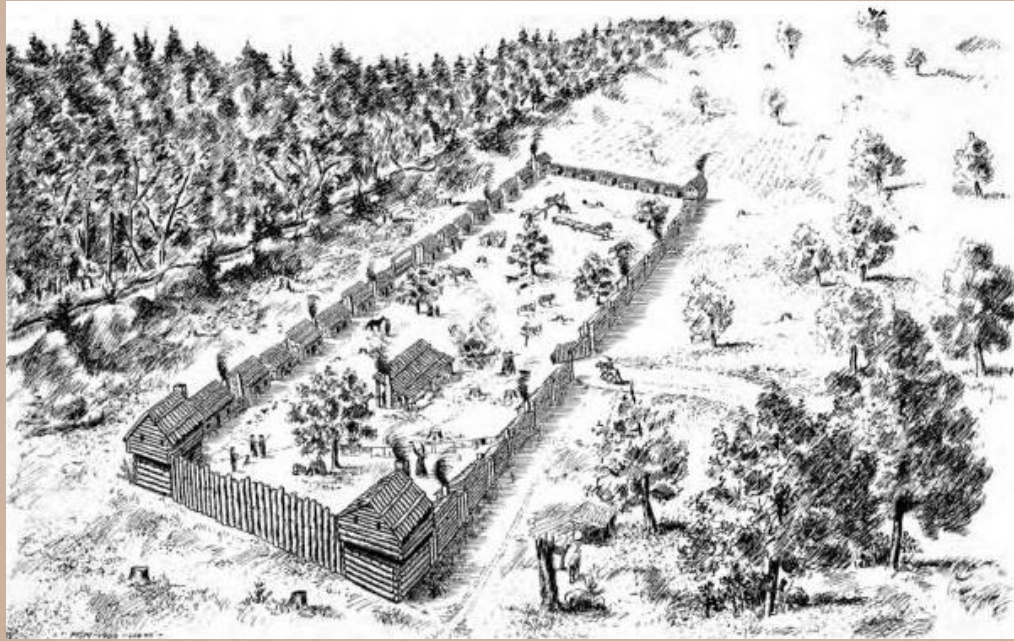
# Illinois in 1795



# Whiteside Family



# Indian Warfare





# Bat

# Creek



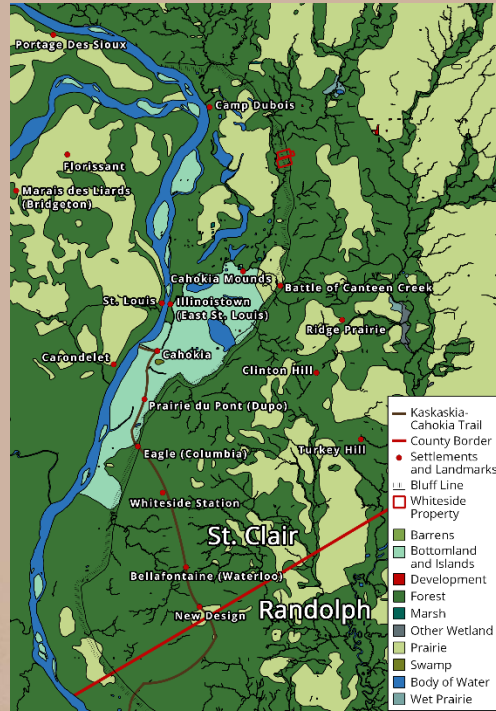
St. Clair  
Randolph

Ste. Genevieve  
La Saline

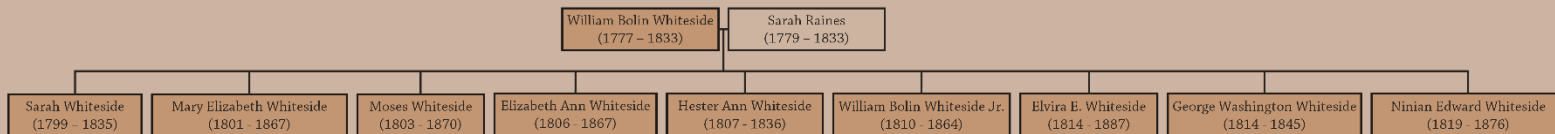
# Trouble with the Law

- Killing of Native Americans
- Kidnapping of African Americans
- Horse stealing

# Move to Goshen Settlement



# Whiteside Family



# Goshen

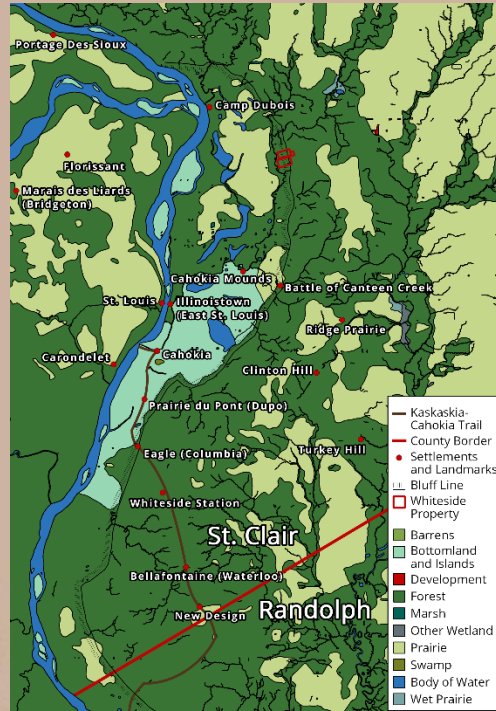
- Settlement of  
by Rev. David
- Biblical refer
- Little Egypt



# Lewis and Clark



# Move to Goshen Settlement



# The War of 1812

- New Madrid Earthquakes
- Served as ranger
- Blockhouse controversy
  - <https://madison-historical.siue.edu/archive/items/show/500>
  - <https://madison-historical.siue.edu/archive/items/show/501>



# Blockhouse Controversy



# After the War



# The Whitesides and Stephenson

- No recorded interaction
- Stephenson represented the “civilizing” of the region to Whiteside



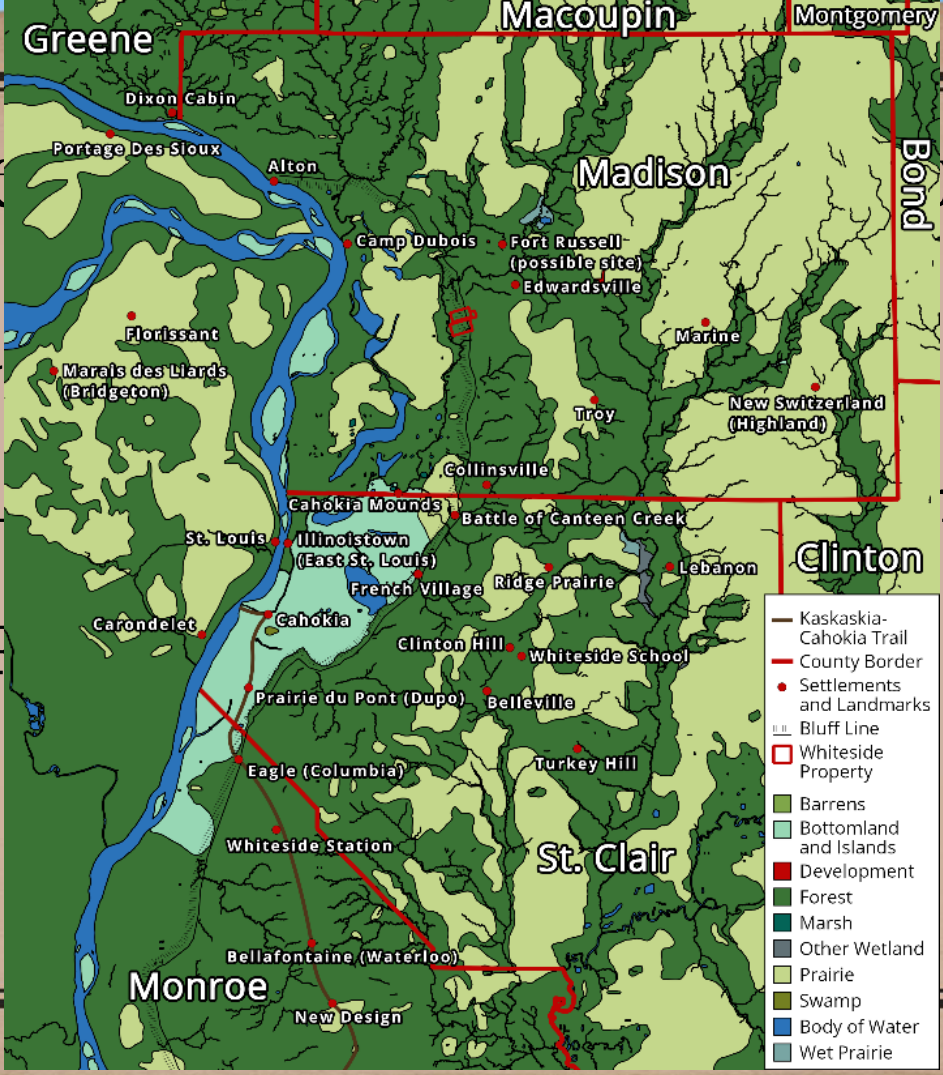
# The Whitesides and Slavery

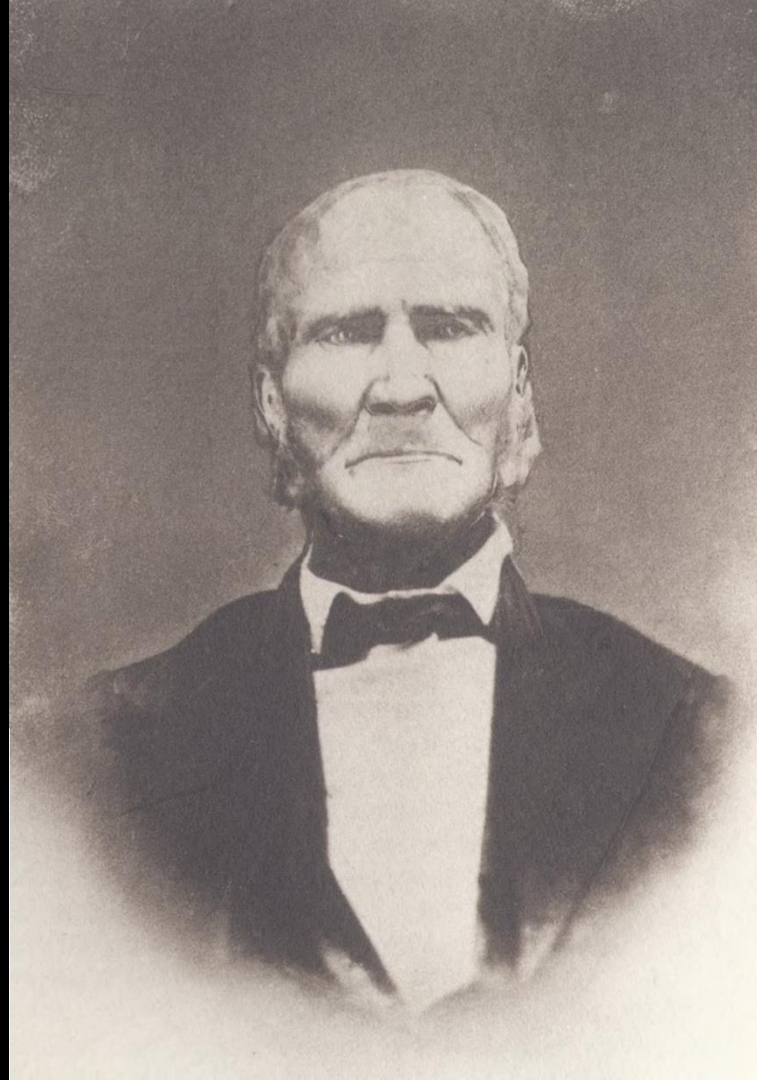
- Slavery in frontier Illinois
- Enslaved people owned by the William B. and Uel
  - Caty Smith
  - Tamor
  - Sam
- Winny v. Whitesides (1824)

# Shelby County

- Elected
- Respon
- Dixon B

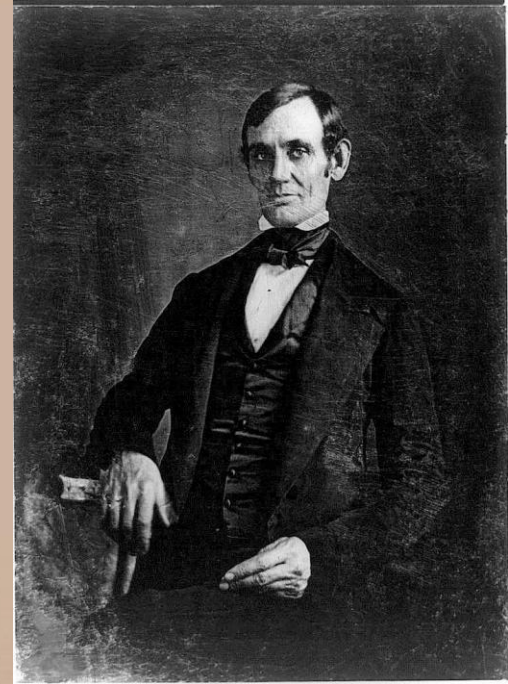
Management





# Black Hawk War

- Major Samuel Whiteside commanded the Spy Battalion of four companies in 1831
- William Bolin captained one of these companies
- In 1832, Samuel promoted to Brigadier General, under his command was a 23-year-old Captain Abraham Lincoln



# Death

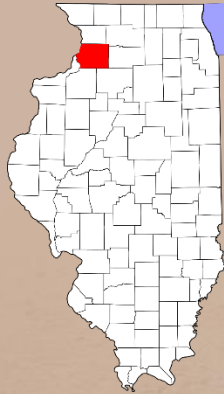
- Sarah died July 1833, William Bolin died November 18, 1833
- Evidence for cholera





# Legacy

- Whiteside School
- Whiteside County



[whiteside.siue.edu](http://whiteside.siue.edu)

[madison-historical.siue.edu](http://madison-historical.siue.edu)

# Conclusion

- Frontier history was alien to me. We share the same space and cultural heritage, but the Whitesides occupied a very different society that only starts feeling familiar in the 1820s.
- This history is largely hidden from us.